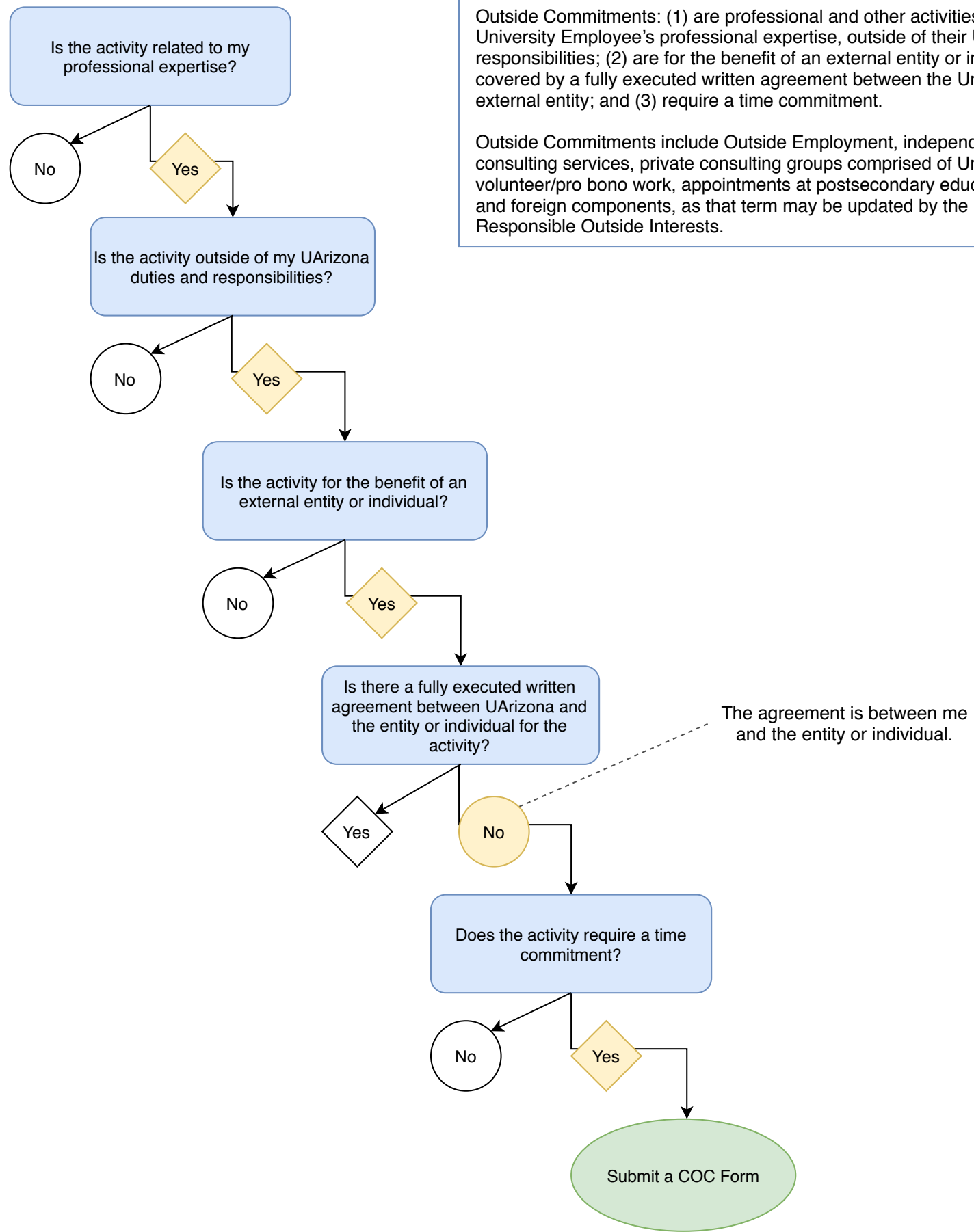


Outside Commitment Decision Tree



Outside Commitments: (1) are professional and other activities that are related to a University Employee's professional expertise, outside of their University duties and responsibilities; (2) are for the benefit of an external entity or individual and are not covered by a fully executed written agreement between the University and the external entity; and (3) require a time commitment.

Outside Commitments include Outside Employment, independent contracts for consulting services, private consulting groups comprised of University Employees, volunteer/pro bono work, appointments at postsecondary educational institutions, and foreign components, as that term may be updated by the University's Office for Responsible Outside Interests.